



# EXCEL

## Wheelchairs



**Built Stronger to Last Longer**

# Medline Quality. We Build 'em Better.

## Competitors (Problems)

## Medline (Solutions)



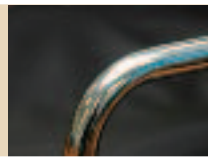
**Elevated leg rest supports wear and rust**, resulting in leg rests slipping out of position over time. (Worn competitive chair shown.)



**Notched, stainless steel ratchet bars** on elevated leg rests will not fall down and are resistant to rust.



**Thin coatings of chrome plating results in greater rusting** of frame and components over time. (Rusted competitive chair shown.)



**Double coating of chrome plating and powder coating** on frame and components gives maximum protection against rusting.



**Plastic seat cradles and armlocks break easily.** (Broken competitive seat cradles shown.)



**Aluminum seat cradles and armlocks** stay strong and sturdy resisting any breakage.



**Cheap bronze welds do not hold up well** over time and under heavy loads. (Bent competitive armrest shown.)



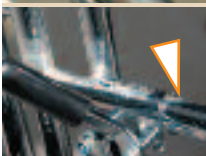
**Tig welding** throughout the frame means our frames are stronger and will last longer; and provides **(300# capacity on most Medline chairs vs. 250# competitors).**



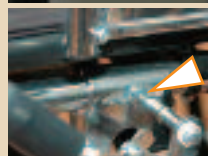
**Upholstery screws strip out** over time, since the screws are inserted into hollow frame tubes. (Stripped out competitive chair shown.)



**Brass threaded inserts** used to fasten down upholstery, ensure that no stripping occurs over time.



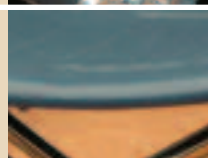
**Wheel locks easily loosen up** over time, because the locks are mounted on slippery frame tubes. (Loose competitive lock shown.)



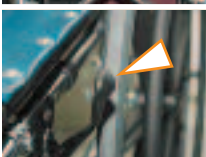
**Knurled tubing under wheel locks** ensures locks stay in position and do not loosen up.



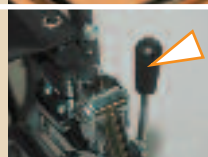
**Sagging and uncomfortable upholstery** results in less comfort for patient. (Sagging competitive upholstery shown.)



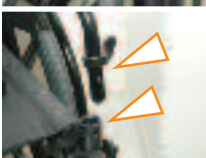
**Higher-density, thicker foam in upholstery with stronger seams and extra plastic layer bonded to vinyl**, results in greater comfort and less stretching over time.



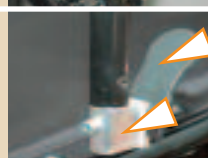
**Uncomfortable, hard-to-grip handles on wheel locks, legrests, and flip-back arms.** (Uncomfortable competitive lock handle shown.)



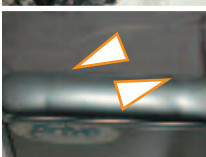
**Comfortable, easy-to-grip handles on wheel locks** are perfect for patients with limited dexterity.



**Plastic arm locks break, and are hard to operate.** (Cheap plastic competitive parts shown.)



**Aluminum arm lock cradles and comfortable, flip-back levers** are easy to operate and long-lasting for patients with limited dexterity.



**Inconsistent product quality** means you can't always rely on getting defect-free products. (Wrinkled arm pad on competitive chair shown.)



**Consistent product quality**, as a result of Medline's application of Six Sigma quality techniques.

**WARNING:**  
This chair contains latex, which may lead to allergic reactions

**Many chairs contain latex**, resulting in risks to both patients and caregivers.



**Most chairs are latex-free**, and properly labeled so patients and caregivers are assured of no dangerous latex allergic reactions.

# EXCEL K4

## SPECIFICATIONS

Weight Capacity	300/350 lbs
Seat Width	16", 18", 20", 22"
Seat Depth	16", 18"
Standard Chart Pocket	no
Footplates	composite
Dual Axle	yes
HCPCS Code	K0004
For full specifications see pages 28-29	

## ACCESSORIES :

O <sub>2</sub> Holder	MDS85181U
I.V. Pole	MDS85183
O <sub>2</sub> / I.V. Combo	MDS85190
Anti-Fold Device	MDS85196
Anti-Tip Device	MDS85189WK4



MDS806550

## FEATURES :

- Weighs 33 pounds (excluding foot riggings) (16", 18").
- Quick release axles allow tool-free removal of the wheels (16", 18").
- Swing-back arms with patent-pending push-button arm release.
- Height adjustable seat back (16"-18").
- Cast aluminum seat cradles for durability.
- Carbon steel frame with chip-resistant chrome plating.
- Threaded seat screw inserts reduce stripping from upholstery changes.
- Padded and upholstered armrests and calf pads.
- Sealed bearings in fork housing, rear wheels and front wheels keep dirt out and are maintenance free.
- Elevating legrest models feature a notched, maintenance-free stainless steel ratchet bar.

Item #	Seat Depth	Seat Width	Description
<b>MDS806500N*</b>	16"	16"	Swing-back desk-length arms, swing-away detachable footrests, quick release axles
<b>MDS806550N*</b>	16"	16"	Swing-back desk-length arms, swing-away detachable elevating legrests, quick release axles
<b>MDS806500NFLA*</b>	16"	16"	Swing-back, removable full-length arms, swing-away detachable footrests, quick release axles
<b>MDS806500*</b>	16"	18"	Swing-back desk-length arms, swing-away detachable footrests, quick release axles
<b>MDS806550*</b>	16"	18"	Swing-back desk-length arms, swing-away detachable elevating legrests, quick release axles
<b>MDS806500FLA*</b>	16"	18"	Swing-back, removable full-length arms, swing-away detachable footrests, quick release axles
<b>MDS806550FLA*</b>	16"	18"	Swing-back, removable full-length arms, swing-away detachable elevating legrests, quick release axles
<b>MDS806500PLUS*</b>	16"	18"	MDS806500 including anti-tippers and desk length height adjustable arms, quick release axles
<b>MDS806550PLUS*</b>	16"	18"	MDS806550 including anti-tippers and desk length height adjustable arms, quick release axles
<b>MDS806560</b>	18"	20"	Swing-back desk-length arms, swing-away detachable footrests, K0007 reimbursement code
<b>MDS806560PLUS</b>	18"	20"	MDS806560 including anti-tippers and desk length height adjustable arms
<b>MDS806565</b>	18"	20"	Swing-back desk-length arms, swing-away detachable elevating legrests, K0007 reimbursement code
<b>MDS806570</b>	18"	+ +22"	Swing-back desk-length arms, swing-away detachable footrests, K0007 reimbursement code
<b>MDS806575</b>	18"	+ +22"	Swing-back desk-length arms, swing-away detachable elevating legrests, K0007 reimbursement code

Upholstery Color: Black \*Height adjustable back + +Available soon with quick-release wheel feature